



Project Image
Coming Soon



Bars installation instructions [click here](#)

Thickness	Width	Length	Weight (kg/pc)	Area (sqft)
11	200	1500	3.52	3.23

General installation Guide [click here](#)

Breakers



Project Image
Coming Soon



Breakers installation instructions [click here](#)

Thickness	Width	Length	Weight (kg/pc)	Area (sqft)
11	200	1500	2.92	3.23

General installation Guide [click here](#)

H Too One



Project Image
Coming Soon



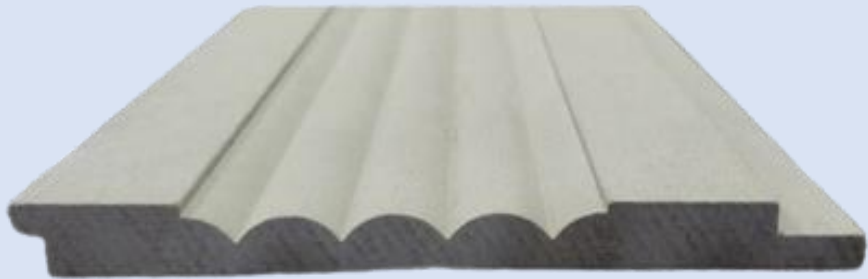
H Too One installation instructions [click here](#)

Thickness	Width	Length	Weight (kg/pc)	Area (sqft)
11	120	3050	5.8	3.93

General installation Guide [click here](#)



Project Image
Coming Soon



M Tyson installation instructions [click here](#)

Thickness	Width	Length	Weight (kg/pc)	Area (sqft)
11	125	1500	2.92	2.02

General installation Guide [click here](#)

Pyramid

Project Image
Coming Soon



Pyramid installation instructions [click here](#)

Thickness	Width	Length	Weight (kg/pc)	Area (sqft)
22	163	2400	9.72	4.21
		3050	12.35	5.35

General installation Guide [click here](#)

Scollop



Project Image
Coming Soon



Scollop installation instructions [click here](#)

Thickness	Width	Length	Weight (kg/pc)	Area (sqft)
11	200	1500	3.22	3.23

General installation Guide [click here](#)

Semi Round

Project Image
Coming Soon



Semi round installation instructions [click here](#)

Thickness	Width	Length	Weight (kg/pc)	Area (sqft)
11	200	1500	3.67	3.23

General installation Guide [click here](#)

Taper



Project Image
Coming Soon



Taper installation instructions [click here](#)

Thickness	Width	Length	Weight (kg/pc)	Area (sqft)
11	200	1500	3.15	3.23

General installation Guide [click here](#)

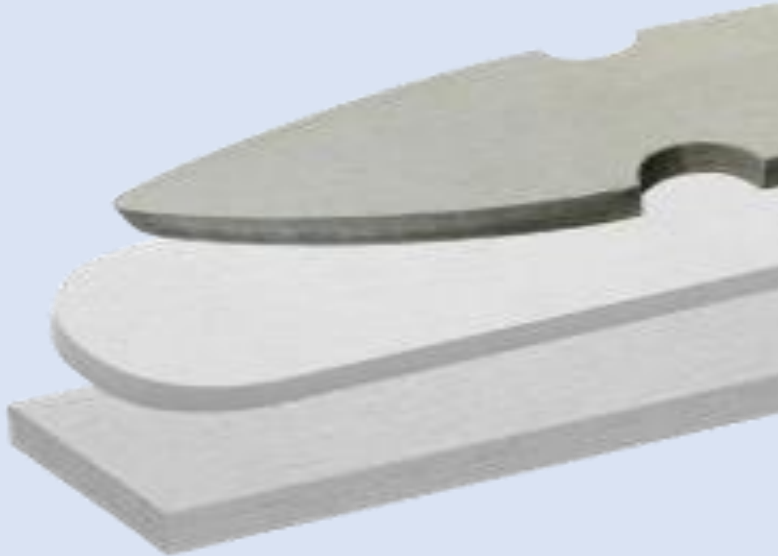
Flute



Flute installation instructions [click here](#)

Thickness	Width	Length	Weight (kg/pc)	Area (sqft)
11	200	2400	5.88	5.16
		3050	7.47	6.56

General installation Guide [click here](#)



Garden Fence installation instructions [click here](#)

Thickness	Width	Length	Weight (kg/pc)	Area (sqft)
16	100	1500	2.98	1.61
		2400	3.07	1.61
		3050	3.07	1.61

General installation Guide [click here](#)

Garden Fence



Kapok installation instructions [click here](#)

Thickness	Width	Length	Weight (kg/pc)	Area (sqft)
16	150	1500	3.45	2.42
		2400	5.52	3.87
		3050	7.01	4.92

General installation Guide [click here](#)

Kapok



Neptune installation instructions [click here](#)

Thickness	Width	Length	Weight (kg/pc)	Area (sqft)
22	260	2400	14.88	6.71
		3050	18.91	8.53

General installation Guide [click here](#)

Ocean

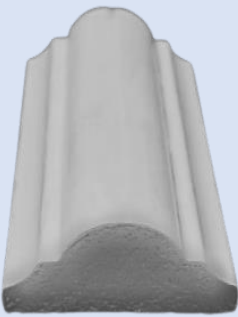


Ocean installation instructions [click here](#)

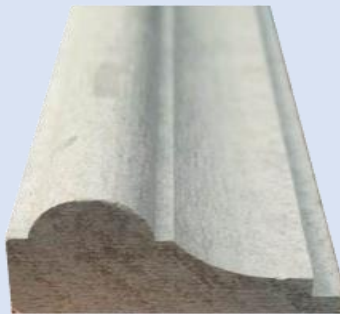
Thickness	Width	Length	Weight (kg/pc)	Area (sqft)
16	150	1500	3.37	2.42
		2400	5.4	3.87
		3050	6.86	4.92

General installation Guide [click here](#)

Wall Molding



A-16



B-22



C-25

Thickness	Width	Length
16	30	1500/2400
22	45	1500/3050
25	88	1500/3050

General installation Guide [click here](#)